

Ourexam



H i g h e r Q u a l i t y

B e t t e r S e r v i c e !

We offer free update service for one year

[Http://www.ourexam.com](http://www.ourexam.com)

Exam : 070-243

Title : Administering and
Deploying System Center
2012 Configuration Manager

Version : Demo

1. You recently migrated from System Center Configuration Manager 2007 to System Center 2012 Configuration Manager.

Your network contains a client computer that runs the 64-bit version of Windows 7 and the 32-bit version of Windows 7.

Some client computers have the Microsoft Application Virtualization (App-V) client installed.

You have an Application named App1.

You have a 64-bit version of App1, a 32-bit version of App1, and a virtual version of App1.

You need to deploy the Application to all of the client computers.

The solution must minimize the amount of administrative effort.

What should you do?

- A. Create a new Application that has three different deployment types and create a target collection for each of the deployment types.
- B. Create a new Application that has three different deployment types and configure global conditions for each of the deployment types.
- C. Create a new package for each version of App1.
- D. Create a new Application for each version of App1.

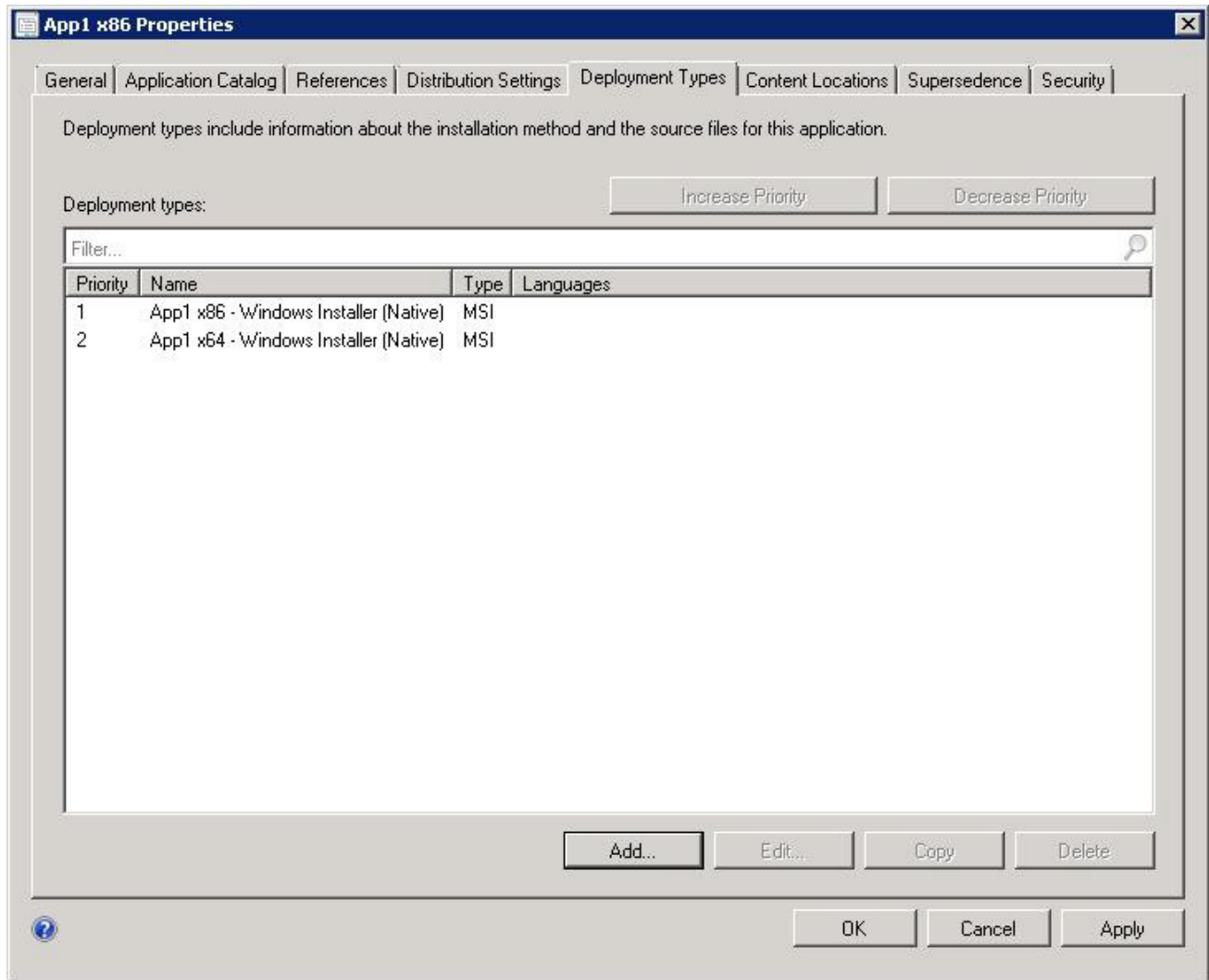
Answer: B

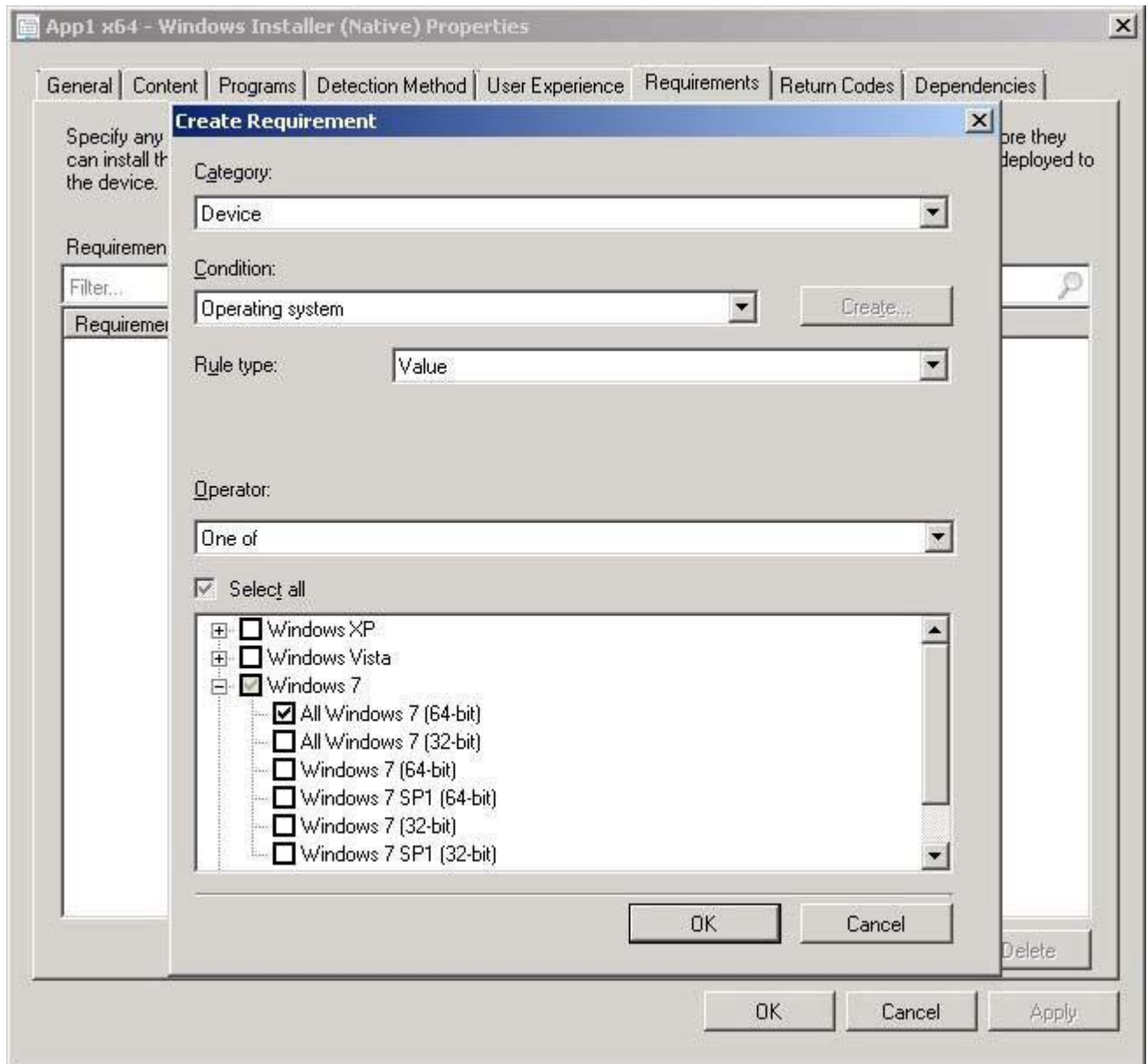
Explanation:

How to Create Deployment Types in Configuration Manager

Supplemental Procedures to Create a Deployment Type

Step 6: Specify Requirements for the Deployment Type





References: Reference: How to Create Deployment Types in Configuration Manager
http://technet.microsoft.com/en-us/library/gg682174.aspx#BKMK_Step2

2. Your network contains a System Center 2012 R2 Configuration Manager Service Pack 1 (SP1) environment.

You have an application named App by using the Application Catalog.

You need to ensure that users in the finance department can install App1 by using the Application Catalog.

What should you do?

- A. Create a required user deployment and target the deployment to all of the finance department users.
- B. Create a required user deployment and target the deployment to all of the client computers in the finance department.
- C. Create an available user deployment and target the deployment to all of the finance department users.
- D. Create an available user deployment and target the deployment to all of the client computers in the finance department.

finance department.

Answer: C

Explanation:

By selecting "Available" it will be selectable for the users in the Application Catalog.

The "Required" option would force the installation to all users in the finance department.

3.Your network contains a System Center 2012 Configuration Manager environment.

Two weeks ago, you deployed a Windows Installer package named App1.

You need to remediate a registry value that applies only to the client computers that have App1 installed.

The solution must minimize network traffic.

What should you do?

A. Modify the App1 Windows Installer package to contain the registry setting, and then create a new application for App1.

B. Modify the App1 Windows Installer package to contain the registry setting, and then configure the existing application for App1 to use the new Windows Installer package.

C. Create an application-based configuration item, configure a rule for an existential type, and then import the registry setting from a client computer that has App1 installed.

D. Create an application-based configuration item, configure the detection method to use the Windows Installer product code of App1, and then import the registry setting from a client computer that has App1 installed.

Answer: D

Explanation:

References: Introduction to Compliance Settings in Configuration Manager

<http://technet.microsoft.com/en-us/library/gg682139.aspx>

4.Your network contains a System Center 2012 Configuration Manager environment.

You need to create a collection that contains all of the virtual machines.

Which query should you use?

A. select * from SMS_R_System where SMS_R_System.ResourceID not in (select ResourceID from SMS_R_System where SMS_R_System.IsVirtualMachine != 1)

B. select * from SMS_R_System where SMS_R_System.IsVirtualMachine != 1

C. select * from SMS_R_System where SMS_R_System.IsVirtualMachine = 1

D. select * from SMS_R_System where SMS_R_System.ResourceID not in (select ResourceID from SMS_R_System where SMS_R_System.IsVirtualMachine = 1)

Answer: C

Explanation:

Use SMS_R_System.IsVirtualMachine = "True" to include all VMs.

Any number that is converted to boolean evaluates to True, apart from 0.

5.Your network contains a System Center 2012 Configuration Manager environment.

You create a report that lists compliance information.

You schedule the report to run every day at 20:00.

You need to ensure that on Friday, you can review the results of the report created on the previous Monday.

What should you configure the report to do?

- A. Use caching.
- B. Use a shared schedule.
- C. Render on Friday.
- D. Use snapshots.

Answer: D

Explanation:

Creating, Modifying, and Deleting Snapshots in Report History

Report history is a collection of report snapshots. You can maintain report history by adding and deleting snapshots, or by modifying properties that affect report history storage. You can create report history manually or on a schedule.