

Ourexam



H i g h e r Q u a l i t y

B e t t e r S e r v i c e !

We offer free update service for one year
[Http://www.ourexam.com](http://www.ourexam.com)

Exam : 4A0-C02

Title : Nokia SRA Composite Exam

Version : DEMO

1. Click on the exhibit.



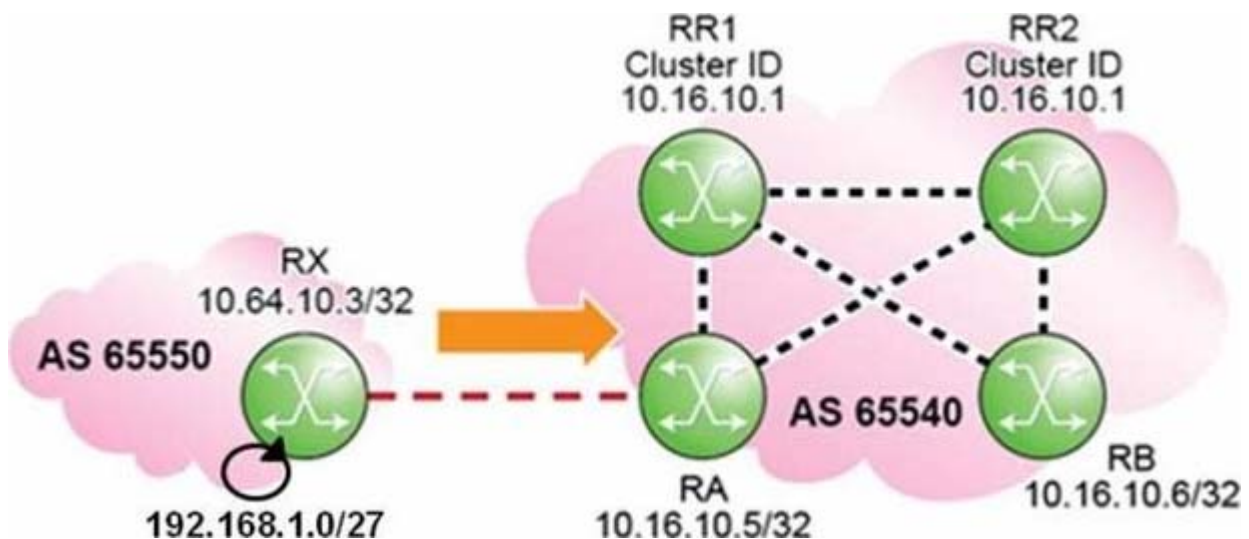
AS 65540 is using MPLS to provide BGP shortcuts for its iBGP routing.

Which routers must be configured with the "configure router bgp igp-shortcuts rsvp-te" command?

- A. Routers R6, R1, R4 and R5.
- B. Routers R1 and R4.
- C. Routers R1, R2, R3 and R4.
- D. Routers R2 and R3.

Answer: B

2. Click the exhibit.



Routers RR1 and RR2 are route reflectors with the same Cluster-ID.

How does router RA treat the updates for prefix 192.168.1.0/27 received from routers RR1 and RR2?

- A. Router RA prefers the update received from router RR1.
- B. Router RA prefers the update received from router RR2.
- C. Router RA flags both updates as invalid.
- D. Router RA accepts both updates and flags them as used.

Answer: C

3. Which of the following statements about the BGP Advertise External feature is FALSE?

- A. It modifies the BGP advertisement logic.
- B. It improves convergence times and allows for better load sharing.
- C. It allows a router to advertise multiple external paths for a single prefix.
- D. It supports both IPv4 and IPv6.

Answer: C

4.An Alcatel-Lucent 7750 SR receives a route from an eBGP peer without a MED.
What MED value is sent to iBGP peers?

- A. 100
- B. 250
- C. The IGP cost
- D. None

Answer: C

5.Which of the following best describes the relationship between locally configured policies and the direction of traffic?

- A. Import policies affect the way the local AS receives traffic, while export policies affect the way it sends traffic.
- B. Import policies affect the way the local AS sends traffic, while export policies affect the way it receives traffic.
- C. Both import and export policies affect the way the local AS receives traffic, but not the way it sends traffic.
- D. Both import and export policies affect the way the local AS sends traffic, but not the way it receives traffic.

Answer: B