

# Ourexam



---

**H i g h e r   Q u a l i t y**

**B e t t e r   S e r v i c e !**

We offer free update service for one year

[Http://www.ourexam.com](http://www.ourexam.com)

**Exam : 640-822**

**Title : Interconnecting Cisco  
Networking Devices Part 1**

**Version : DEMO**

1.Which three statements are true about the operation of a full-duplex Ethernet network? (Choose three.)

- A. There are no collisions in full-duplex mode.
- B. A dedicated switch port is required for each full-duplex node.
- C. Ethernet hub ports are preconfigured for full-duplex mode.
- D. In a full-duplex environment, the host network card must check for the availability of the network media before transmitting.
- E. The host network card and the switch port must be capable of operating in full-duplex mode.

**Answer:** ABE

2.Which router command can be used to determine the status of Serial 0/0?

- A. show ip route
- B. show interfaces
- C. show s0/0 status
- D. debug s0/0
- E. show run
- F. show version

**Answer:** B

3.Which commands display information about the Cisco IOS software version currently running on a router? (Choose three.)

- A. show running-config
- B. show stacks
- C. show version
- D. show flash
- E. show protocols
- F. show IOS

**Answer:** ACD

4 After the shutdown command has been issued on the serial 0/0 interface, what will be displayed when the show interface serial 0/0 command is issued by the administrator?

- A. Serial0/0 is administratively down, line protocol is down
- B. Serial0/0 is down, line protocol is down
- C. Serial0/0 is up, line protocol is down
- D. Serial0/0 is administratively down, line protocol is administratively down
- E. Serial0/0 is up, line protocol is up
- F. Serial0/0 is down, line protocol is up

**Answer:** A

5 Refer to the output of the three router commands shown in the exhibit.

**Router# show version**

Cisco Internetwork Operating System Software  
IOS (tm) C2600 Software (C2600-DO3S-M), Version 12.1(5)T12,  
RELEASE SOFTWARE (fc1)  
TAC Support: <http://www.cisco.com/tac>  
Copyright (c) 1986-2002 by cisco Systems, Inc.  
Copyright (c) 1986-2002 by cisco Systems, Inc.  
Image text-base: 0x80008088, data-base: 0x81169C28

ROM: System Bootstrap, Version 12.2(10r)1, RELEASE  
SOFTWARE (fc1)

Router uptime is 10 minutes  
System returned to ROM by power-on  
System image file is "flash:c2600-do3s-mz.121-5.T12.bin"

cisco 2621 (MPC860) processor (revision 0x00) with  
44032K/5120K bytes of memory

Processor board ID JAD06390AR4 (617842770)  
M860 processor: part number 0, mask 49  
Bridging software.  
X.25 software, Version 3.0.0.  
Basic Rate ISDN software, Version 1.1.  
2 FastEthernet/IEEE 802.3 interface(s)  
2 Low-speed serial(sync/async) network interface(s)  
1 ISDN Basic Rate interface(s)  
32K bytes of non-volatile configuration memory.  
16384K bytes of processor board System flash (Read/Write)

Configuration register is 0x2102

**Router# configure terminal**

Enter configuration commands, one per line.  
End with CNTL/Z.

Router(config)# **interface e0**

% Invalid input detected at '^' marker.

A new technician has been told to add a new LAN to the company router.

Why has the technician received the error message that is shown following the last command?

- A. The interface was already configured.
- B. The interface type does not exist on this router platform.
- C. The IOS software loaded on the router is outdated.
- D. The router does not support LAN interfaces that use Ethernet.
- E. The command was entered from the wrong prompt.

**Answer: B**

6 The system LED is amber on a Cisco Catalyst 2950 series switch.

What does this indicate?

- A. The system is malfunctioning.
- B. The system is not powered up.
- C. The system is powered up and operational.
- D. The system is forwarding traffic.
- E. The system is sensing excessive collisions.

**Answer: A**

7.Refer to the exhibit.

SwitchA# **show mac-address-table**

< non-essential output omitted >

Destination Address	Address Type	VLAN	Destination Port
00b0.d056.fe4d	Dynamic	1	FastEthernet0/3
00b0.d043.ac2e	Dynamic	1	FastEthernet0/4
00b0.d0fe.ac32	Dynamic	1	FastEthernet0/5
00b0.d0da.cb56	Dynamic	1	FastEthernet0/6

**Frame received by SwitchA:**

Source MAC	Destination MAC	Source IP	Destination IP
00b0.d056.fe4d	00b0.d0da.895a	192.168.40.5	192.168.40.6

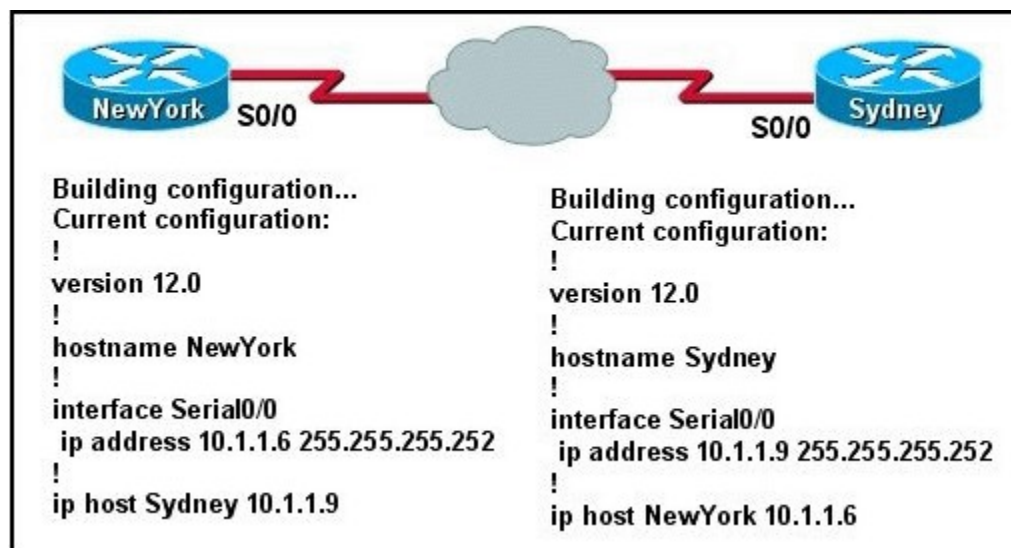
Switch A receives the frame with the addressing shown.

According to the command output also shown in the exhibit, how will Switch A handle this frame?

- A. It will drop the frame.
- B. It will forward the frame out port Fa0/3 only.
- C. It will flood the frame out all ports.
- D. It will flood the frame out all ports except Fa0/3.

**Answer: D**

8.Refer to the topology and partial configurations shown in the exhibit.



The network administrator has finished configuring the NewYork and Sydney routers and issues the command ping Sydney from the NewYork router. The ping fails.

What command or set of commands should the network administrator issue to correct this problem?

- A. Sydney(config)# interface s0/0 Sydney(config-if)# cdp enable
- B. Sydney(config)# interface s0/0 Sydney(config-if)# no shut
- C. Sydney(config)# line vty 0 4 Sydney(config)# login Sydney(config)# password Sydney

D. Sydney(config)# ip host Sydney 10.1.1.9

E. Sydney(config)# interface s0/0 Sydney(config-if)# ip address 10.1.1.5 255.255.255.252

NewYork(config)# ip host Sydney 10.1.1.5

**Answer: E**

9.Which two statements describe the operation of the CSMA/CD access method?(Choose two.)

A. In a CSMA/CD collision domain, multiple stations can successfully transmit data simultaneously.

B. In a CSMA/CD collision domain, stations must wait until the media is not in use before transmitting.

C. The use of hubs to enlarge the size of collision domains is one way to improve the operation of the CSMA/CD access method.

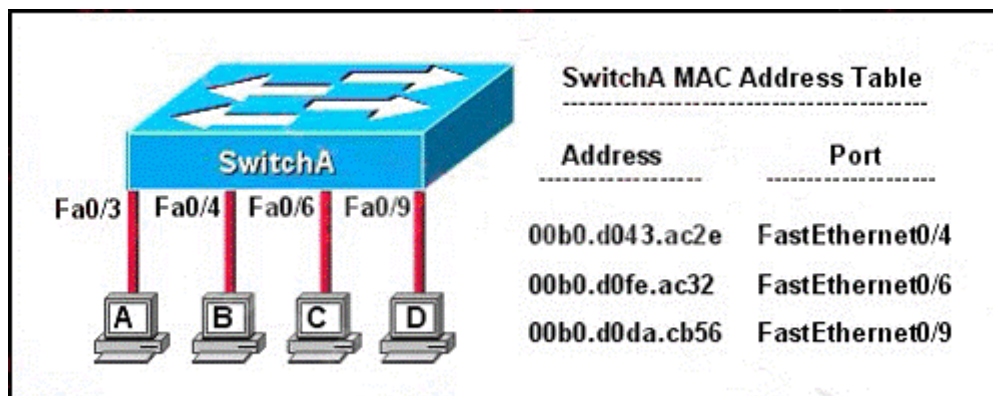
D. After a collision, the station that detected the collision has first priority to resend the lost data.

E. After a collision, all stations run a random backoff algorithm. When the backoff delay period has expired, all stations have equal priority to transmit data.

F. After a collision, all stations involved run an identical backoff algorithm and then synchronize with each other prior to transmitting data.

**Answer: BE**

10.Refer to the topology and MAC address table shown in the exhibit.



Host A sends a data frame to host D.

What will the switch do when it receives the frame from host A?

A. The switch will add the source address and port to the MAC address table and forward the frame to host D.

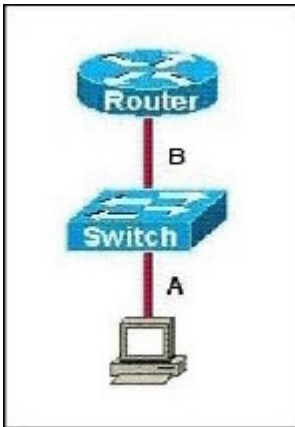
B. The switch will discard the frame and send an error message back to host A.

C. The switch will flood the frame out of all ports except for port Fa0/3.

D. The switch will add the destination address of the frame to the MAC address table and forward the frame to host D.

**Answer: A**

11.Refer to the exhibit.



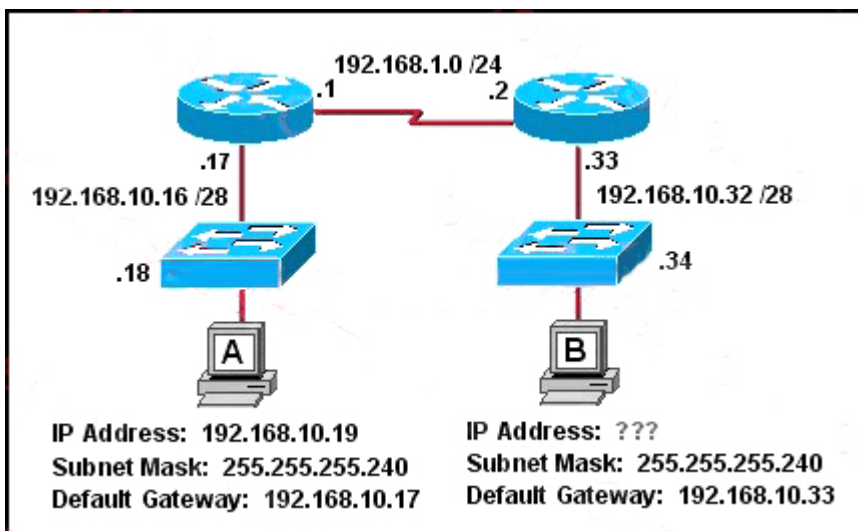
The two connected ports on the switch are not turning orange or green.

What would be the most effective steps to troubleshoot this physical layer problem? (Choose three.)

- A. Ensure that the Ethernet encapsulations match on the interconnected router and switch ports.
- B. Ensure that cables A and B are straight-through cables.
- C. Ensure cable A is plugged into a trunk port.
- D. Ensure the switch has power.
- E. Reboot all of the devices.
- F. Reseat all cables.

**Answer: BDF**

12.Refer to the exhibit.



Host B has just been added to the network and must acquire an IP address.

Which two addresses are possible addresses that will allow host B to communicate with other devices in the network? (Choose two.)

- A. 192.168.10.32
- B. 192.168.10.38
- C. 192.168.10.46
- D. 192.168.10.47
- E. 192.168.10.49
- F. 192.168.10.51

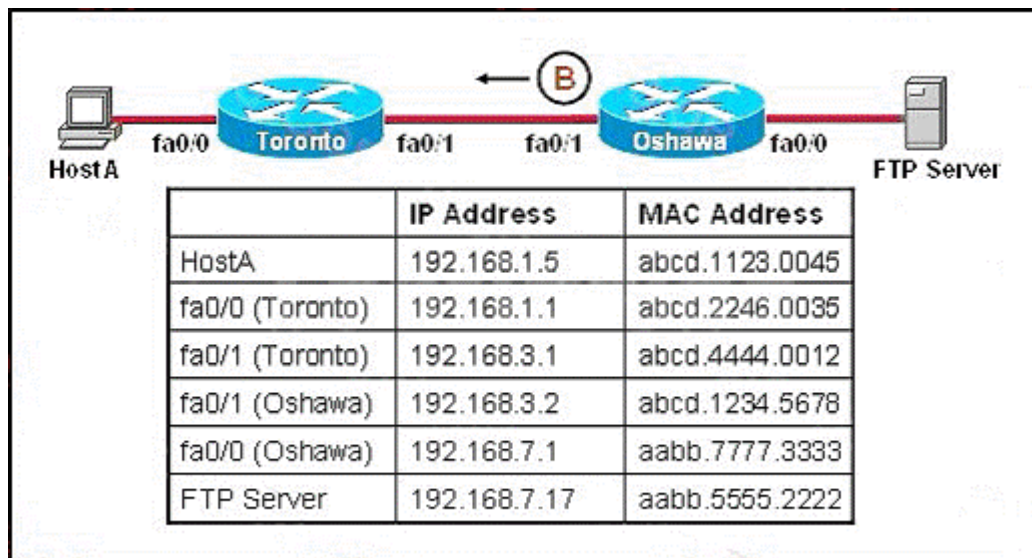
**Answer: BC**

13.What is the subnet address for the IP address 172.19.20.23/28?

- A. 172.19.20.0
- B. 172.19.20.15
- C. 172.19.20.16
- D. 172.19.20.20
- E. 172.19.20.32

**Answer: C**

14.Refer to the exhibit.



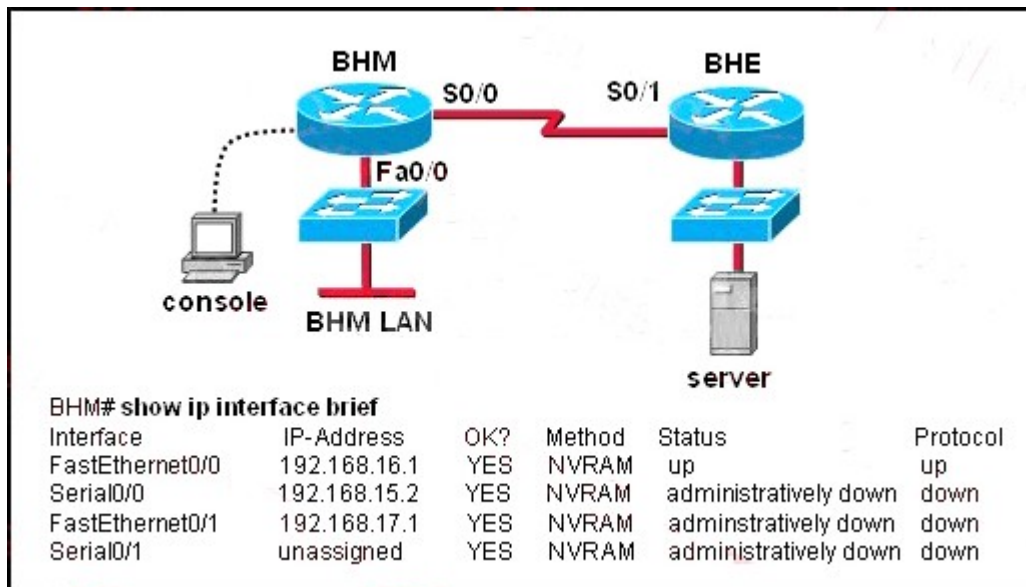
HostB is sending a file to HostA. B represents the frame as it leaves the Oshawa router. What is the Layer 2 destination address of the frame at this point?

- A. abcd.1123.0045
- B. abcd.1234.5678
- C. abcd.2246.0035
- D. abcd.4444.0012
- E. aabb.5555.2222

**Answer: D**

15.Examine the network diagram and router output shown in the exhibit.





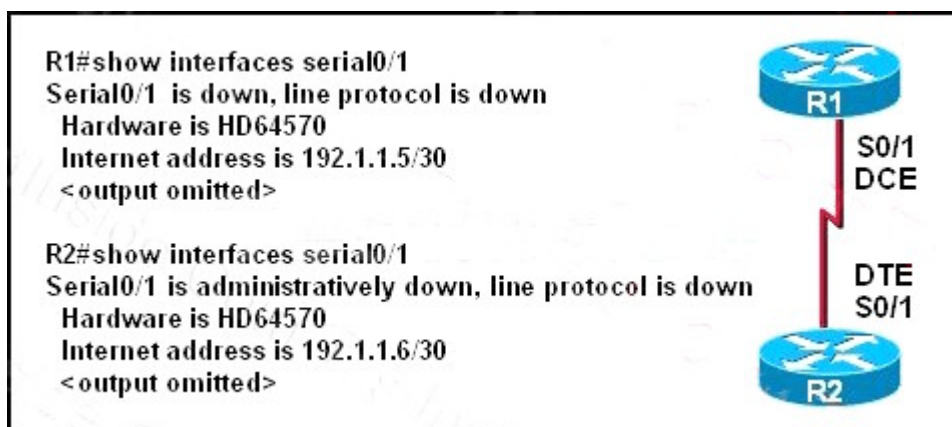
Users on the BHM LAN are unable to access the server attached to the BHE router.

What two things should be done to fix this problem? (Choose two.)

- A. Enter the configuration mode for interface fastethernet0/0.
- B. Enter the configuration mode for interface serial0/0.
- C. Enter the configuration mode for interface serial0/1.
- D. Issue the run command.
- E. Issue the enable command.
- F. Issue the no shutdown command.

**Answer:** BF

16.Refer to the exhibit.

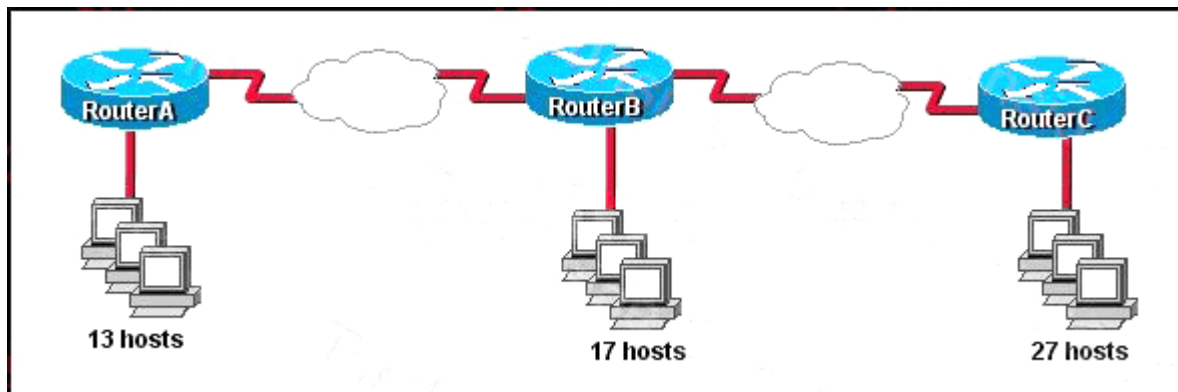


A network technician is unable to ping from R1 to R2. Using the output of the show interfaces serial0/1 command, what should the administrator do to correct the problem?

- A. Replace the serial cable between R1 and R2.
- B. Reseat the serial connectors on the R1 and R2 routers.
- C. Configure the serial0/1 interface on R2 with the no shutdown command.
- D. Configure the serial0/1 interface on R1 with the clock rate 56000 command.
- E. Configure the serial0/1 interface on R1 with the ip address 192.1.1.7 255.255.255.252 command.

**Answer: C**

17.Refer to the exhibit.



The internetwork is using subnets of the address 192.168.1.0 with a subnet mask of 255.255.255.224. The routing protocol in use is RIP version 1.

Which address could be assigned to the FastEthernet interface on RouterA?

- A. 192.168.1.31
- B. 192.168.1.64
- C. 192.168.1.127
- D. 192.168.1.190
- E. 192.168.1.192

**Answer: D**

18.Refer to the exhibit.

```
HQ# configure terminal
HQ(config)# interface fastethernet 0/0
HQ(config-if)# ip address 192.168.1.17 255.255.255.0
HQ(config-if)# no shutdown
HQ(config-if)# interface serial 0/0
HQ(config-if)# ip address 192.168.1.65 255.255.255.240
HQ(config-if)# no shutdown
% 192.168.1.0 overlaps with FastEthernet0/0
```

After configuring two interfaces on the HQ router, the network administrator notices an error message. What must be done to fix this error?

- A. The serial interface must be configured first.
- B. The serial interface must use the address 192.168.1.2.
- C. The subnet mask of the serial interface should be changed to 255.255.255.0.
- D. The subnet mask of the FastEthernet interface should be changed to 255.255.255.240.
- E. The address of the FastEthernet interface should be changed to 192.168.1.66.

**Answer: D**

19.From where does a small network get its IP network address?

- A. Internet Assigned Numbers Authority (IANA)

- B. Internet Architecture Board (IAB)
- C. Internet Service Provider (ISP)
- D. Internet Domain Name Registry (IDNR)

**Answer: C**

20. Which IP address is a private address?

- A. 12.0.0.1
- B. 168.172.19.39
- C. 172.20.14.36
- D. 172.33.194.30
- E. 192.169.42.34

**Answer: C**