

Ourexam



H i g h e r Q u a l i t y

B e t t e r S e r v i c e !

We offer free update service for one year
[Http://www.ourexam.com](http://www.ourexam.com)

Exam : **642-354**

Title : Cisco Storage Networking
Support Specialist(CSNSS)

Version : DEMO

1. Issuing the show role command to check a defined role in an MDS 9000 Series switch will produce the following output: Role : Manage VSAN Description : vsan policy : deny Permitted vsans : 2-4 ----- Rule Type Command-type Feature 1. permit config * 2. deny config fspf 3. permit debug zone 4. permit exec fcping Which of the following two functions can a user with role Manage undertake? (Choose two.)

- A. change fspf parameters
- B. configure FC port parameters for VSAN 3
- C. issue a debug command for a port
- D. configure zoning for all VSANs
- E. check connectivity for VSAN 2

Correct: B E

2. What two commands must be executed on an MDS 9000 family switch in order to change a dynamically assigned Domain ID 5 to a static Domain ID 10 for VSAN 10? Choose two.

- A. switch(config-if)# shut fcdomain 5
- B. switch(config-if)# no shut fcdomain 10
- C. switch(config)# fcdomain domain 10
- D. switch(config)# fcdomain domain 10 static vsan 10
- E. switch(config)# fcdomain restart vsan 10
- F. switch(config)# fcdomain restart disruptive vsan 10

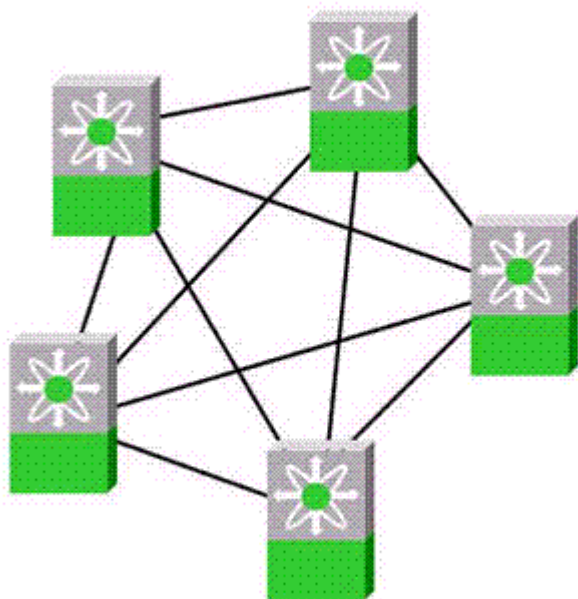
Correct: D F

3. Which command is used to display the list of hosts configured for Fabric Analyzer remote capture?

- A. show fcanalyzer
- B. clear fcanalyzer
- C. show remote fcanalyzer
- D. show fcanalyzer remote list

Correct: A

4. Refer to the exhibit. Each link shown is a 16-port PortChannel. What are the problems with the design?



- A.unpredictable hop count
- B.inherent oversubscription of ISLs
- C.low percentage of usable ports
- D.requires director-class switches for reliability

Correct:C

5.Reference the exhibit. Given the output from the show command in the exhibit, what does the error message indicate is wrong with the configuration?

```
PO6-MDS9216A#sh int fc1/2
fc1/2 is down (Isolation due to no common vsans with peer on trunk)
  Hardware is Fibre Channel SFP is short wave laser w/o OFC (SN)
  Port WWN is 20:02:00:0d:ec:0c:7c:80
  Admin port mode is E, trunk mode is on
  Port vsan is 1
  Receive data field Size is 2112
  Beacon is turned off
  minutes input rate 120 bits/sec, 15 bytes/sec, 0 frames/sec
```


- A.Trunk mode has been administratively set to E instead of TE.
- B.The port needs a shut/noshut to become active.
- C.The port has been incorrectly left in VSAN 1.
- D.The trunk needs configured VSANs allowed on both sides.

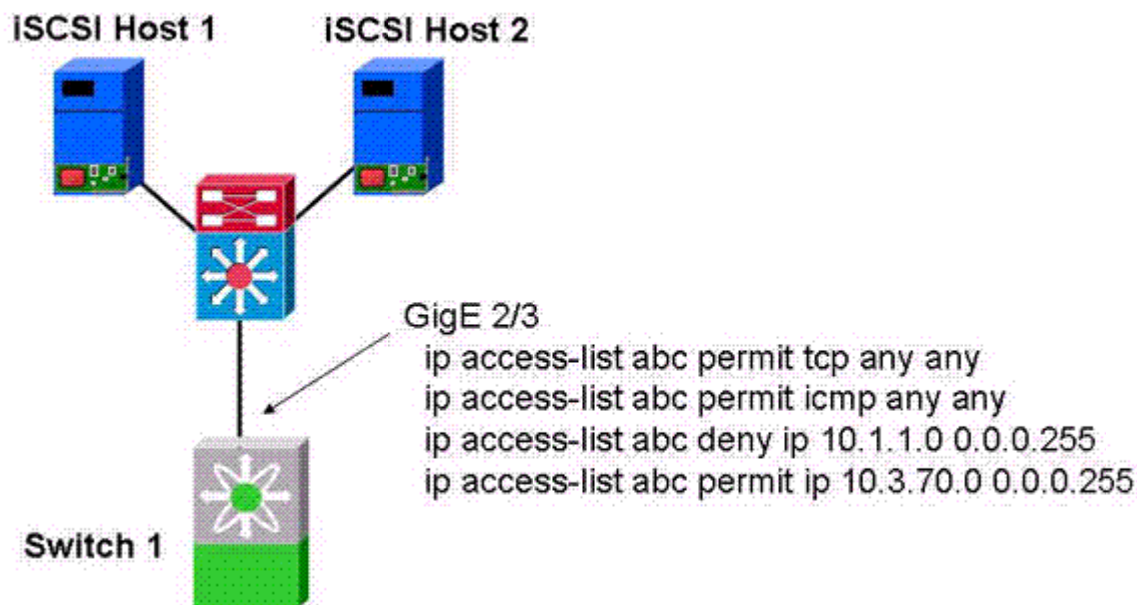
Correct:D

6.Which three of these statements are attributes of the Cisco SET? (Choose three.)

- A.SET configuration is persistent.
- B.SBCCS and SCSI commands are supported.
- C.SET initiators can only communicate with SET targets.
- D.SET requires SAN-OS 2.0 or higher and the SAN Extension IP license.
- E.Only SCSI read/write commands are supported.

Correct:C D E

7.Consider the ACL applied to a GigE 2/3 on a Cisco MDS switch. What happens to traffic that does not match any of the rules?



- A.The traffic is allowed to pass through the interface because there is an implicit permit applied.
- B.The traffic is not allowed to pass through the interface because there is an implicit deny applied.
- C.The ACL is invalid and will not be accepted, and as a result the traffic will be allowed to pass.

Correct:B

8.The Call Home feature provides what type of notification when critical events occur?

- A.SNMP
- B.syslog
- C.PBX
- D.e-mail

Correct:D

9.Your company has a multiswitch fabric including Switch A and Switch B. An administrator of Switch A creates the following zoneset and successfully activates it: zoneset name ZoneSet1 vsan 1 zone name Zone1 vsan 1 pwwn 21:01:00:e0:8b:3c:03:b6 pwwn 21:01:00:e0:8b:3c:55:bb Later in the day a second administrator creates the following zone set on Switch B: zoneset name ZoneSet2 vsan 1 zone name Zone1 vsan 1 pwwn 21:01:00:e0:8b:3c:03:b6 pwwn 21:01:00:e0:8b:3c:55:aa What happens when the administrator of Switch B attempts to activate ZoneSet2?

- A.ZoneSet2 becomes the active zoneset for both Switches A and B.
- B.The fabric segments and ZoneSet2 become the active zoneset for Switch B only.
- C.The fabric segments and ZoneSet 2 become the active zoneset for Switch A only.
- D.The fabric segments and ZoneSet 1 remain the active zone set for Switch B, while ZoneSet 2 becomes the active zoneset for Switch A.

Correct:A

10.The Cisco Traffic Analyzer is required to gather historical data for what type of information?

- A.Class F traffic
- B.SCSI session data
- C.Class 2 errors
- D.FC framing errors

Correct:B

11.An administrator finds these lines in the running configuration file: interface vsan1 ip address 10.10.10.3 255.255.255.0 no shut What is the impact of this entry?

- A.The entry sets the IP address on the management port and places it in VSAN 1.
- B.The entry creates an interface for IPFC.
- C.The entry sets up a common IP address to be shared by all GigE ports in VSAN 1.
- D.The entry sets up a default gateway for VSAN 1.

Correct:B

12.Which three of these upper-level protocols are supported by FC-4? (Choose three.)

- A.HIPPI
- B.SBCCS
- C.OSPF
- D.SCSI
- E.PTP
- F.CDP

Correct:A B D

13.Which two of these items are advantages of configuring static domain IDs? (Choose two.)

- A.facilitates troubleshooting
- B.reduces FSPF link-state updates
- C.increases switch throughput
- D.ensures that persistent FCIDs will not change
- E.enables LUN masking

Correct:A D

14.You have been asked to install a Cisco MDS switch for your company. If you accept all installation defaults, which of these will occur?

- A.default port state: shut default zone policy: deny
- B.default port state: no shut default zone policy: deny
- C.default port state: shut default zone policy: permit
- D.default port state: no shut default zone policy: permit

Correct:A

15.What are four valid protocols for copying software to the MDS 9000 family switches? (Choose four.)

- A.Remote Copy Service
- B.Secure Copy Protocol
- C.Trivial File Transfer Protocol
- D.File Transfer Protocol
- E.Secure Trivial File Transfer Protocol
- F.Secure File Transfer Protocol

Correct: B C D F

16. Which three CLI commands can be used to view remaining buffer-to-buffer credits? (Choose three.)

- A. show interface fc x/y
- B. show interface fc x/y brief
- C. show interface fc x/y counters
- D. show interface fc x/y bbcredit
- E. show interface fc x/y flow-control

Correct: A C D

17. You are looking at the LEDs on an MDS 9500 Supervisor module. If the Status LED is orange, which statement is true?

- A. The module cannot boot because of a corrupted image on the flash.
- B. The diagnostic test failed. The module is not operational because a fault occurred.
- C. The module is booting or running diagnostics.
- D. Incompatible power supplies are installed.

Correct: C

18. When installing the Port Analyzer Adapter, how do you connect the Fibre Channel port to the MDS switch?

- A. single-mode fiber and SC to LC connector
- B. multimode fiber and LC to LC connector
- C. single-mode fiber and LC to LC connector
- D. multimode fiber and SC to LC connector

Correct: B

19. Your company is planning a SAN deployment using Fibre Channel connections from a central, highly secure data center to several less secure branch offices. Which of these security features would allow you to disable all branch office switch management ports and yet still maintain the complete suite of TCP/IP-based SAN management utilities?

- A. IPSec
- B. Port Mode Security
- C. Port Security
- D. Overlay VSAN

Correct: D

20. An administrator reviews the running configuration of a switch that a junior administrator has prepared to be placed in a heterogeneous SAN environment. This environment includes three different brands of Fibre Channel switches. In this particular environment, only VSAN 1 is being used. Which of these attributes suggests that the switch has not been properly configured?

- A. A static domain ID has been set to 0x21.
- B. src-dst-ox load balancing has been selected.
- C. Interop mode 3 has been selected.
- D. FCC has been enabled.

Correct: A