

# Ourexam



---

**H i g h e r   Q u a l i t y**

**B e t t e r   S e r v i c e !**

We offer free update service for one year  
[Http://www.ourexam.com](http://www.ourexam.com)

**Exam** : **70-383**

**Title** : Recertification for MCSE:  
SharePoint

**Version** : DEMO

## 1. Topic 1, Large Company

### Background

You are the SharePoint administrator for a large company. You are responsible for installing and configuring a multi-server SharePoint environment that will be used for information management and collaboration.

The company has an Active Directory Domain Services (AD DS) domain. User-specific contact information, including employee photos, is stored and managed in Active Directory. All employees are located in the Active Users organizational unit (OU).

The User Profile Synchronization service runs on a server named SERVER1.

### Business Requirements

The SharePoint environment must meet the following business requirements:

- Ensure that users can connect to the portal by using the same URL from any location.
- Ensure that users can access corporate information from outside the network without using a VPN connection.
- Allow users to configure notifications for content changes.
- Allow users to follow content creators.
- Limit the number of sites and people each user can follow to 100.
- Allow content authors to upload documents, large image files, and large video files for consumption by internal and external users.
- Allow administrators to promote search query results across the entire company.
- Utilize My Sites to share content.
- Provide opportunities for social interaction.

### Technical Requirements

You must meet the following technical requirements for the SharePoint environment:

- Do not exceed the minimum hardware specifications.
- Install the minimum supported versions of all software on the servers.
- Control the growth of storage utilization.
- Maximize existing content database usage before creating new content databases.
- Store large files on network attached storage (NAS).
- Ensure that all web applications, site collections, files, databases, and components stay within the supported limits.
- Configure the User Profile Synchronization service to import user profile data from Active Directory.
- Grant the User Profile service account the least permissions necessary to read data.
- Ensure that current and future SharePoint environments include the most recent software updates.
- Use predefined database naming conventions.
- Create individual user sites by using the `https://contoso.com/personal/path`.

### HOTSPOT

You need to ensure that user-selected subscription content automatically appear on users' My Sites.

Which configuration option should you choose? (To answer, select the appropriate option in the answer area.)



### People

- Manage User Properties | Manage User Profiles
- Manage User Sub-types | Manage Audiences
- Schedule Audience Compilation | Compile Audiences
- Manage User Permissions | Manage Policies



### Synchronization

- Configure Synchronization Connections
- Configure Synchronization Timer Job
- Configure Synchronization Settings | Start Profile Synchronization



### Organizations

- Manage Organization Properties | Manage Organization Profiles
- Manage Organization Sub-types



### My Site Settings

- Setup My Sites | Configure Trusted Host Locations
- Manage Promoted Sites | Publish Links to Office Client Applications
- Manage Social Tags and Notes | Manage Following

Answer:



### People

- Manage User Properties | Manage User Profiles
- Manage User Sub-types | Manage Audiences
- Schedule Audience Compilation | Compile Audiences
- Manage User Permissions | Manage Policies



### Synchronization

- Configure Synchronization Connections
- Configure Synchronization Timer Job
- Configure Synchronization Settings | Start Profile Synchronization



### Organizations

- Manage Organization Properties | Manage Organization Profiles
- Manage Organization Sub-types



### My Site Settings

- Setup My Sites | Configure Trusted Host Locations
- Manage Promoted Sites | Publish Links to Office Client Applications
- Manage Social Tags and Notes | Manage Following

2.You need to import employee photos into SharePoint user profiles by using the least amount of administrative effort.

Which three actions should you perform? (Each correct answer presents part of the solution. Choose three.)

- A. Define a mapping for the thumbnailPhoto attribute of the Picture user profile property.
- B. Run the Update-SPUserSolution Windows PowerShell cmdlet.
- C. Run an incremental synchronization of the User Profile Synchronization service.
- D. Run a full synchronization of the User Profile Synchronization service.
- E. Run the Update-SPProfilePhotoStore Windows PowerShell cmdlet.
- F. Define a mapping for the photo attribute of the Picture user profile property.

**Answer:** A,D,E

**Explanation:**

A: Step 3 below.

D: Step 5 below.

E: Step 6 below.

Note: Importing Images into SharePoint User Profiles My Sites

To make the user images that we have uploaded into the thumbnail Photo attribute in Active Directory available in SharePoint we will first need to map it to the Picture property in the User Profile Service Application.

Firstly you will need to go into the User Profile Service Application.

1. Central Admin > Application Management > Service Applications > Manage Service Applications > User Profile Service Application
2. Then you will need to go into the Manage User Properties section and edit the Picture property.
3. Next we will map the Active Directory property thumbnail Photo to the Picture property in SharePoint
4. Once the mapping has been applied the Manage User Properties page will look like this.
5. Now we will need to run a Full User Profile Synchronization job so that SharePoint can import the user images from Active Directory Synchronization > Start Profile Synchronization > Start Full Synchronization
6. Lastly we will need to force SharePoint to update the User Profile Database – This will create the thumbnails that are used in My Sites and the User Profile Service. This will need to be run in the SharePoint PowerShell Console with the appropriate My Site permissions.

```
1 # This will create thumbnails from the user profile images saved in the My Sites User
  Profile pictures library
2 Update-SPProfilePhotoStore -MysiteHostLocation http://mysites -
  CreateThumbnailsForImportedPhotos 1
```

Reference: IMPORTING USER PROFILE PICTURES INTO ACTIVE DIRECTORY, EXCHANGE 2010 & SHAREPOINT 2010 – COMPLETE GUIDE

3.You need to ensure that service applications meet the technical requirements by using the least amount of administrative effort.

What should you do?

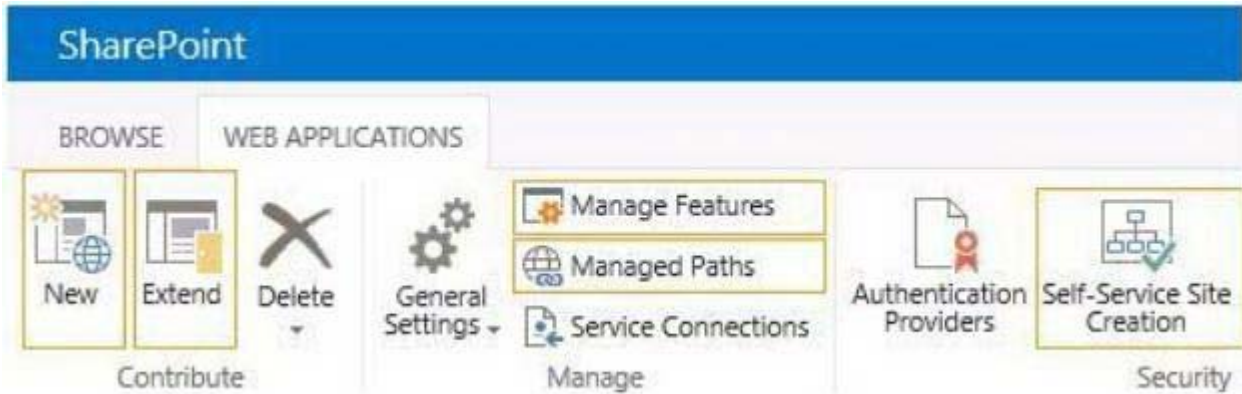
- A. Use the Farm Configuration Wizard to add service applications.
- B. Use Windows PowerShell to configure service applications.
- C. Use the SharePoint Products Configuration Wizard to complete the server configuration.
- D. In Central Administration, manually create each service application.

**Answer: B**

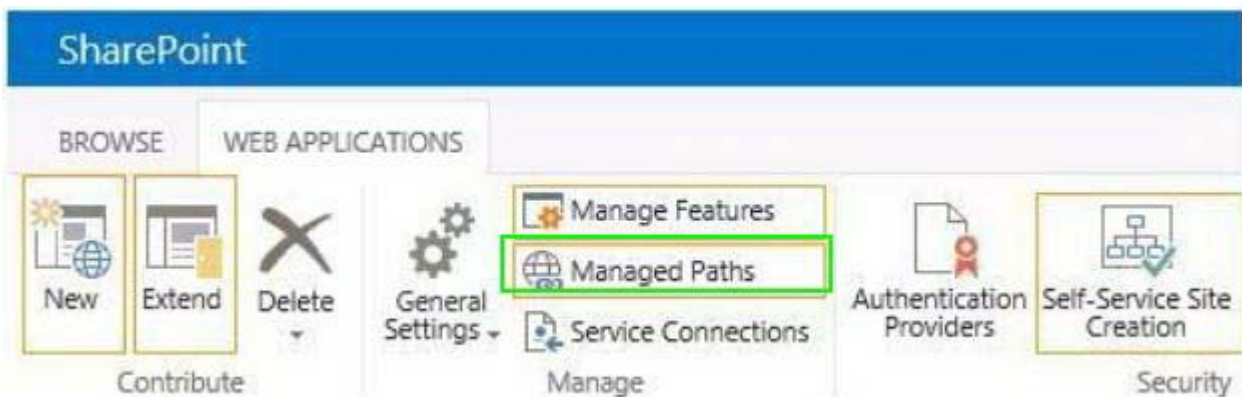
4.HOTSPOT

You are setting up individual user sites. You need to ensure that site addresses follow corporate guidelines.

Which command should you use? (To answer, select the appropriate command in the answer area.)



**Answer:**



5.You copy the content of the SharePoint installation media and software updates to your hard drive. You need to meet the setup requirements for future SharePoint server installations.

What should you do?

- A. Extract the content of each file to the Updates folder by running the /extract:<path> command.
- B. Upgrade the installation media by running the /lang:<lcid> command.
- C. Extract the content of each file to the Setup folder by running the /extract:<path> command.
- D. Extract the content of each file to the PrerequisiteInstallerFiles folder by running the /extract:<path> command.

**Answer: A**