

# Ourexam



---

**H i g h e r   Q u a l i t y**

**B e t t e r   S e r v i c e !**

We offer free update service for one year

[Http://www.ourexam.com](http://www.ourexam.com)

**Exam : SPS-200**

**Title : IBMSPSSMPRO: IBM  
SPSS Modeler Professional**

**Version : Demo**

1.Which key items must be identified before a data mining project is started? (Select all that apply)

- A. A business problem or question
- B. Data quality problem
- C. Available data
- D. Available expertise on the data and business

**Answer: B**

2.Given the following Output Table to create a select node which includes vehicles from both groups A and B, click on A and on B (as shown) and select from the menu. ?

|    | Policyholder age | Vehicle group | Vehicle age | Average cost of claims | Number of claims |
|----|------------------|---------------|-------------|------------------------|------------------|
| 1  | 17-20            | A             | 0-3         | 259                    | 8                |
| 2  | 17-20            | A             | 4-7         | 282                    | 8                |
| 3  | 17-20            | A             | 8-9         | 133                    | 4                |
| 4  | 17-20            | A             | 10+         | 160                    | 1                |
| 5  | 17-20            | B             | 0-3         | 272                    | 10               |
| 6  | 17-20            | B             | 4-7         | 249                    | 26               |
| 7  | 17-20            | B             | 8-9         | 280                    | 1                |
| 8  | 17-20            | B             | 10+         | 11                     | 1                |
| 9  | 17-20            | C             | 0-3         | 199                    | 9                |
| 10 | 17-20            | C             | 4-7         | 288                    | 13               |
| 11 | 17-20            | C             | 8-9         | 179                    | 1                |
| 12 | 17-20            | C             | 10+         | 3005                   | 0                |
| 13 | 17-20            | D             | 0-3         | 763                    | 3                |
| 14 | 17-20            | D             | 4-7         | 880                    | 2                |
| 15 | 17-20            | D             | 8-9         | 3005                   | 0                |
| 16 | 17-20            | D             | 10+         | 3005                   | 0                |
| 17 | 21-24            | A             | 0-3         | 302                    | 10               |
| 18 | 21-24            | A             | 4-7         | 194                    | 31               |
| 19 | 21-24            | A             | 8-9         | 135                    | 10               |
| 20 | 21-24            | A             | 10+         | 105                    | 4                |

A. Generate ...- Select Node "i" or n

B. Generate ...- Select Node "i" or A" d

**Answer: B**

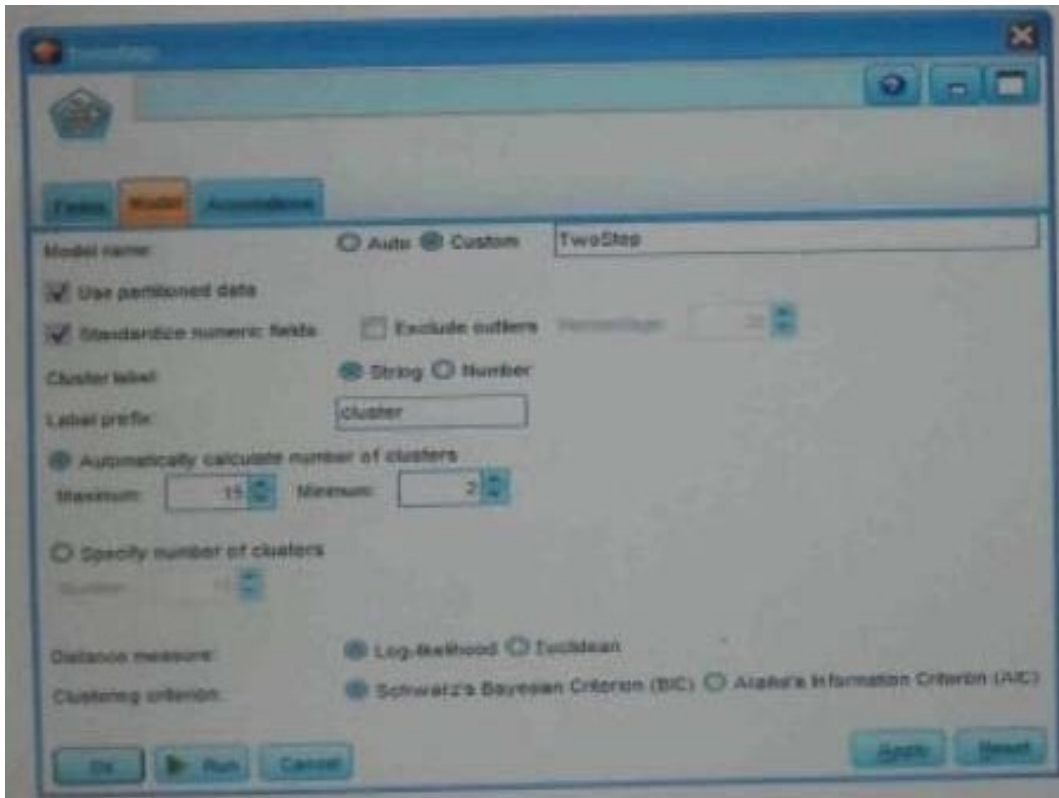
3.Which nodes are best suited for revealing relationship between categorical (nominal, ordinal) fields?

(Select all that apply)

- A. Means node
- B. Matrix node
- C. Distribution node
- D. Table node

**Answer: A,C**

4.In two step node shown below, what does standardize numeric fields mean?



- A. Eliminate outliers to improve results.
- B. Transform the numeric fields to a scale with a mean of zero and variance of one.
- C. Limit the number of created clusters.
- D. Use only the numeric fields scale.

**Answer: B**

5.Which statement is correct regarding the sample node dialogue shown below?



- A. It will select every 60th record from the data.
- B. It will randomly select exactly 60% of all the record.
- C. It will select approximately 60% of the records. This is, each record will have a 60% probability of being selected.
- D. It will always draw the same 60% of records each time this sample node is run.

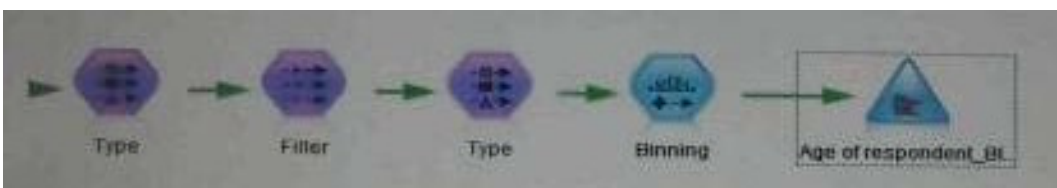
**Answer: C**

6.Which statements are true of the Feature Selection node? (Select all that apply)

- A. Input fields can be selected on the basis of importance.
- B. The Target fields can be either categorical or continuous measurement.
- C. The Input fields can only be continuous measurement.
- D. When a target field is not specified then it will create a generalized output.

**Answer: A,B**

7.What is the reason that the three nodes in the following figure have been colored purple?



- A. The purple nodes were pushed back to the database.
- B. IBM SPSS Modeler is running out of memory.

- C. The purple nodes will be executed later.
- D. There are multiple type nodes in a row.

**Answer: A**

8. On the PCA/Factor node when doing a Principle Component analysis without rotation, the values reported on the Component Matrix represents the correlation between each field and factor.

- A. True
- B. False

**Answer: B**

9. As a default, the Evaluation node provides a graph of the first category of your target field. To change the category, you need to modify which sector?



- A. User defined hit
- B. User defined score
- C. Include business rule
- D. Export results to file

**Answer: A**

10. Which Model nodes can have a categorical target field? (Select all that apply)

- A. Discriminant node
- B. Linear node
- C. Neural Net node
- D. C & R Tree node

**Answer: A,B**